



Safety enhancements at Bristol Port



Anniversary of an icon



Electric vehicle charging

- AGRICULTURE
- PROJECTS
- GROUND CARE
- DAIRY
- COUNTRY STORE
- TRAILER CENTRE
- LORRY CRANES
- CONSTRUCTION
- MOTOR GROUP
- ENERGY, FIRE & SECURITY
- ONLINE STORE
- MACHINERY IMPORTS



## GROUND CARE

# SMART CIRCUIT

Spectators at motorsport events understandably spend most of the time with their eyes glued to the track action, but we should spare a thought for the enormous amount of work that goes into keeping the surrounds of a circuit looking their best – such an important aspect of the setting for many of the UK's best known venues.

Like so many British motorsport circuits, Thruxton – near Andover in Hampshire – started life as a World War II airfield. It was from here that support operations for the D-Day landings were flown, as well as being the departure point for paratroopers who took part in Operation Biting in 1942, during which German radar equipment was seized near the French coast.

The circuit we see today was established in 1968 and follows the line of the airfield's perimeter road. The infield still hosts a busy airfield and this, plus planning restrictions governing noise, mean that racing can only take place on 12 days each year. Nevertheless, as the UK's fastest circuit Thruxton is a special place for motorsports enthusiasts and it hosts the British Touring Car Championship in May and the British Superbike Championship in August, among others.

The task of maintaining Thruxton's grass areas is the responsibility of operations manager Pat Blakeney. "The trackside areas are important for presenting the circuit at its best as well as providing safe run-off areas for competitors who may get into difficulties," he says. "Those are the areas that are most in public view, but we also look after the parking

fields as well as the large grass areas in the centre of the circuit and around the airfield. In total it's about 250 acres."

Despite the size of the challenge, the limit on the number of racing days has always meant that Pat has had to work with a relatively small budget – the backbone of his kit is one tractor and a tractor-mounted mower. After the tractor had been replaced earlier this year Pat's thoughts turned to the mower: "We had been using a Cutlass Topper which was coming up to 15 years old. It had given good service but it needed to be replaced and we were looking for something that would enable us to cover the ground quickly and also give a good finish."

Research suggested that a Wessex Proline roller mower – which happens to be made in Andover – could be the answer. After T H WHITE had given a demonstration Pat's mind was made up and at the beginning of July he took delivery of a Wessex RMX-300 rigid deck roller mower. He was immediately impressed: "This is the largest rigid deck mower in the range; with a 3m cutting width it helps the team to cover the acreage while the front and rear rollers give an outstanding striped effect – it's great!

"It was also very nice to deal with T H WHITE again as I started my career by serving an agricultural engineering apprenticeship with them back in 1980. It's strange how things so often go full circle."

Wessex Proline roller mowers are available in widths from 1.8m to 8m to cover almost any application. To arrange a demonstration just contact any T H WHITE Groundcare branch.



Top: The striped finish from the Wessex RMX-300 (inset) enhances the presentation at Thruxton.

Above: The 2.54m Wessex RMX-240 is the model of choice for users who need to travel on public roads between mowing jobs without incurring the cost of a folding wing model.

News and information from the T H WHITE Group

T H WHITE GROUP

**GROUP**

**WHITE'S WORLD**

White's World is published monthly by T H WHITE. To contact our Divisions, call:

Agriculture Knockdown	01454 238181
Marlborough	01672 512328
Frome	01373 465941
Huntley	01452 830303
Toddington	01242 620211
Devizes	01380 722381
Andoversford	01451 850363
Stockbridge	01264 811260

**Projects 01380 723040**

Groundcare Knockdown	01454 238181
Reading	0118 976 0088
Redditch	01527 597770
Stockbridge	01264 811260

Dairy Frome	01373 465941
Huntley	01452 830303

Country Marlborough	01672 518408
Store Knockdown	01454 238181

Trailer Centre 0118 976 0088

Lorry Cranes 01380 722381

Construction 01672 512328

Motor Group 01793 680480

Energy, Fire & Security 01380 726656

Online Store [www.thwhitestore.co.uk](http://www.thwhitestore.co.uk)

Machinery Imports 01264 811260

[www.thwhite.co.uk](http://www.thwhite.co.uk)  
 head\_office@thwhite.co.uk  
 © T H WHITE Group 2017 E&OE  
 Nursted Road Devizes Wilts SN10 3EA  
 01380 722381

**WHITE'S WORLD ONLINE**

WHITE'S WORLD is also available in digital form where stories can easily be reviewed by division. In the digital edition we also include news, offers and invitations which may not be covered in the printed magazine.

To sign up for digital updates, please visit [www.thwhite.co.uk/whites-world-signup/](http://www.thwhite.co.uk/whites-world-signup/). We will then send you a monthly email with links to all the top stories and offers, which you will receive before the printed copies arrive. You will have the option to unsubscribe at any time.

**MEET US AT THE SHOWS...**

**Confor Woodland Show** Longleat, Warminster, Wiltshire, 7-8 September.

**MACHINERY IMPORTS**

**Frome Agricultural and Cheese Show** West Woodlands Show Ground, Somerset, 9 September.

**AGRICULTURE DAIRY**

**Royal Berkshire County Show** Newbury Showground, Priors Court, Berkshire, 16-17 September.

**GROUND CARE TRAILER CENTRE**

**Saltex** NEC Birmingham, 1-2 Nov, Stands H190 & H202, Hall 6. **GROUND CARE MACHINERY IMPORTS**

**AGRICULTURE**

**2017: A BETTER HARVEST?**

Well, this year's harvest kicked off early with a couple of combine deliveries from the manufacturer very touch and go, but we got there. In making sure that these combines were delivered to our customers the casualty was our demonstrator, which arrived after all the customer combines and missed the first couple of weeks of action, so our apologies if we did not get to you.

At one stage it looked as if we could all be going on holiday in mid-August but it's funny how nature has a way of squaring things up. The overall feeling seems pretty good, with better yields and better prices compared to last year – even with added drying costs. The balers have had a harder time with the straw being more of a challenge and few real drying days. The latest New Holland 1290 Plus balers went really well with good solid feedback on shape density and speed.

With the demise of New Holland at C&O Tractors we helped out a number of new customers who worked out we were their nearest dealer – and not as far away as they thought. As always the team all pulled together and went the extra mile to keep folks on the road. CNH helped by despatching parts overnight from all over the world, so to them and all our colleagues a big 'thank you'. Here are a couple of photos from our combine demo – we also ran a harvest photo competition for our customers – results next month! **Pat Smith**



**ENERGY, FIRE & SECURITY**

**ELECTRIC VEHICLE CHARGING**

It is widely predicted that over the next 20 years we will see one of the biggest shifts in vehicle technology since the invention of the motor car, with the increased uptake of electric powered vehicles and hybrids. In anticipation of this, our Energy, Fire and Security Division has trained its electricians to install Electric Vehicle (EV) charging equipment.

For Tesla owners we are able to offer installation of their own Tesla chargepoint (pictured), so if you are a current or prospective Tesla car owner in the Wiltshire area, you can find us on the Tesla website.

For commercial clients we can also offer a wider range of EV chargepoints which attract grant funding from the Government-backed OLEV grant scheme for electric vehicle chargepoints. These products come in a range of sizes and voltages depending on the type of usage you are planning, right up to high voltage commercial grade fast-charging stations.

If you are interested in an electric vehicle chargepoint for your home or business please contact us on 01380 726656, or email [energy@thwhite.co.uk](mailto:energy@thwhite.co.uk).

**AGRICULTURE**

**MORE MULE FOR YOUR MONEY**

In the growing utility vehicle market, the **Kawasaki Mule SX 4x4** from T H WHITE represents outstanding value for money.

Light, economical, quiet and compact, the SX has all the features of more expensive UTVs including 2/4wd, Hi-Lo range, difflock, automatic transmission, adjustable steering wheel, a comfort bench seat and a steel rear tipping load bed capable of carrying up to 181kg. Powered by a super reliable 4-stroke petrol engine, the SX is restricted to a very useable 25mph.

There are lots of accessories available and many users opt for the cab, screen and back panel pictured here. If you want a first class UTV, with a fantastic pedigree, the MULE SX 4x4 makes light work of farm, equine and estate duties. Priced from £6,779 plus vat.

For further information please contact Simon Knight on 07860 712963 (Marlborough), or Tim Rochfort on 07973 911934 (Toddington).



**KEEPING YOU SAFE & SECURE**

**Access Control systems**

From simple pinpad and swipe units to fingerprint biometric entry modules we can control access to any size of property, including those with restricted areas or secure rooms.



**Intruder Alarms**

From bells only to fully policed, monitored systems. We can install the right system tailored to you or your insurance company's requirements. Already have a system? T H WHITE can carry out your annual tests, with a friendly face and a service you can trust.



**Fire Alarms**

Business owner? Landlord? Health and safety manager? Our surveyors are fully accredited in system design and can work with you on any project to make sure you comply with the latest regulations.



**Fire Extinguishers**

We offer supply and maintenance of fire fighting equipment, together with honest and accurate advice to keep you safe and compliant with the latest regulations. We also offer safety signage and accessories such as cabinets, vehicle boxes and escape ladders.



**CCTV & IP Cameras**

For security, health and safety or machinery monitoring, we have the system for you. From fully HD conversions of existing systems to IP set ups we can future proof your CCTV installation. Coupled with our smart phone technologies you can monitor your system from anywhere in the world.



**Electric Gates & Barriers**

From bespoke domestic style electrical gates to commercial barriers and bollards. Physical security combined with security systems enhance the protection of sites and stop would-be intruders in their tracks.



Call us today for a free, no obligation survey

**T H WHITE**  
 ENERGY, FIRE & SECURITY

01380 726656  
[thwhitesecurityandfire.co.uk](http://thwhitesecurityandfire.co.uk)

**16-17 SEPT 17**  
**A FESTIVAL OF FARMING**  
**FOOD AND FUN!**

**THE ROYAL COUNTY OF BERKSHIRE SHOW**

**THE HANDS ON COUNTRYSIDE ADVENTURE FOR ALL THE FAMILY!**

**BERKSHIRESHOW.CO.UK**

**FAMILY TICKET NOW AVAILABLE**

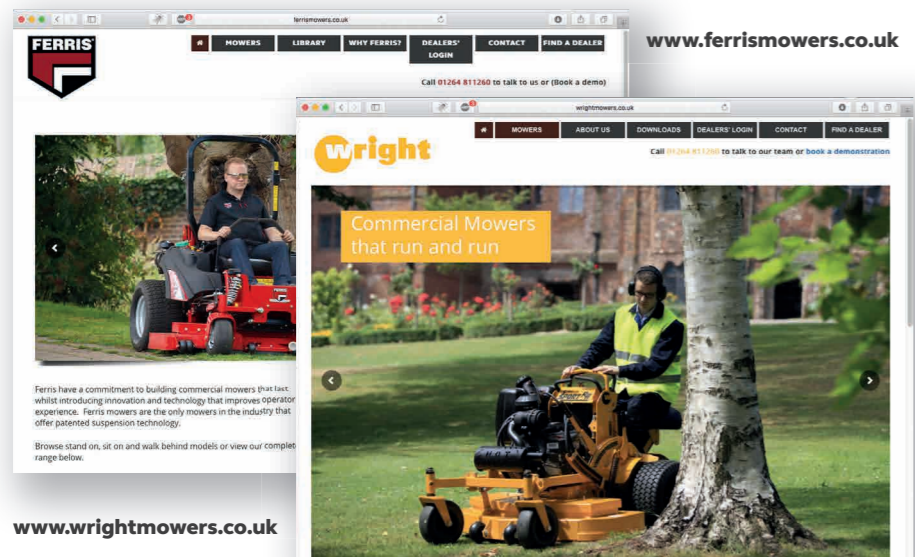
**UK'S BEST LIVESTOCK ON SHOW**

**STUNNING LINE-UP SPECTACULAR SHOWS & STUNTS**

**EARLY BIRD TICKETS SAVE 50% ONLINE!**

**Visit the T H WHITE stand on Vodafone Avenue.**  
 Our Groundcare and Trailer Centre experts will be on hand with Ifor Williams trailers and professional groundcare machinery including Iseki tractors and mowers, Wessex machinery, Amazone groundcare and the new Kawasaki utility vehicles.

**MACHINERY IMPORTS  
NEW WEBSITES FOR FERRIS AND WRIGHT MOWERS**



**T H WHITE Machinery Imports is the official UK distributor for American-built Ferris and Wright mowers.**

To support the growing following for these high quality, versatile machines, new websites have been launched

for both brands, making it easy to get information on the complete ranges and compare products, with downloadable resources. There's also a dealer search facility, dedicated dealer areas and contact details.

**T H WHITE  
AGRICULTURE**

**GOLD**

For orders placed before 30 November 2017,  
invoiced before 28 February 2018

**20% OFF**  
Labour and In-Stock Parts

**AGRICULTURAL EQUIPMENT  
WINTER SERVICE 2017-18**

**SILVER**

For orders placed before 30 December 2017,  
invoiced before 31 March 2018

**15% OFF**  
Labour and In-Stock Parts

**We will service ANY make,  
ANY model, ANY age**

**BRONZE**

For orders placed before 15 February 2018,  
invoiced before 30 April 2018

**10% OFF**  
Labour and In-Stock Parts

**Contact your local branch NOW. Normal monthly terms apply for all work invoiced. Discount only applies to work booked with associated labour and parts.**

Extended payment terms available subject to credit approval. T H WHITE Terms & Conditions apply to all Winter Service packages.

**PROJECTS**

**IMPROVING SAFETY FOR BRISTOL PORT**

Situated on the Severn Estuary close to the M4/M5 corridor with excellent rail connections is The Bristol Port Company, encompassing an estate of some 2,600 acres across both the Avonmouth and Portbury Docks – the UKs most centrally located deep sea Port. Its extensive operations, which embrace the movement of containers/ automotive/dry and liquid goods, include 800,000 vehicles and 6 million tonnes of dry bulk material per annum, and more than 25 per cent of Heathrow Airport's jet fuel.

The Bristol Port Company appointed T H WHITE Projects to assist with a bespoke design for personnel safety improvements to an existing Chinese-manufactured portside mobile container crane which operates within the container port area of the Portbury Dock complex. The project involved the design, manufacture and installation of a secondary personnel escape route, including a series of specially designed access platforms, ladders and interface connections for assembly and permanent fitment to one side of the crane's vertical portal structure, adjacent to a hot exhaust manifold.

Following an engineering site survey focused on the relevant area of the crane structure which stands approximately 20m high, a 3D inventor drawing illustrating the proposed personnel escape route design was produced for customer discussion. After approval by the client the numerous component detailed drawings were generated ready for issue to the fabrication team and workshop.

Once the numerous fabricated items were manufactured and inspected they were then supplied to The Bristol Port Company in the customer's corporate red colour as a high specification quality paint finish to withstand the rigours of the marine operating environment.

Working closely with the Port Engineer, the pre-planning and installation programme was carefully scheduled and project-managed before the works commenced in order to take advantage of a window of opportunity in the Port's operations. Only suitable weather conditions would then be required to allow the installation to go ahead.

With planning completed and the various risk assessments (RAMS) generated an August weekend was chosen so that there would be a three-day period for the T H WHITE Projects installation team to complete the works. Prior to the installation, the team all went through a strict on-site induction to ensure they were aware of the Port's procedures and safety at work policy for all operatives and contractors.



**Job done!** The access platforms, ladders and connections that T H WHITE Projects added to the Chinese-built crane gantry are now in place to provide a secondary personnel escape route. This project illustrates the flexibility of T H WHITE's fabrication and installation services. The 3D visualisation for the project is inset.

With a break in the weather, the sitework commenced mid-August and, with the crane alongside and the assistance of the cherry picker, the team proceeded to weld connecting brackets to the upright of the container crane. Once correctly aligned, they fitted the secondary escape platforms and connecting ladders to the structure, as seen in the photograph.

The project was successfully completed, commissioned and handed over to The Bristol Port Company with its new bright red secondary personnel escape route now part of the mobile container crane.

This is the latest example in a series

of design, manufacture and installation applications in which bespoke steelwork has been supplied and fitted by the Projects team.

T H WHITE Projects specialises in cereal processing and storage solutions of all sizes, from farm and estate installations to large commercial or industrial bulk facilities, taking each project from conception to completion.

Do visit our new Projects website ([www.thwhiteprojects.co.uk](http://www.thwhiteprojects.co.uk)) to gain an overview of our capabilities and, if you have a scheme you would like to talk about, please do contact us on 01380 723040, or email [projects@thwhite.co.uk](mailto:projects@thwhite.co.uk).



**SKITTLES 2017-18**

Since 1972 T H WHITE has held a mixed skittles tournament during the winter months for our customers in the farming communities.

We are now inviting entries from teams in our Agriculture trading areas, five couples per team, season starts in October.

**Interested?** Please call Sharon Minty on 01454 238181 or email [sm@thwhite.co.uk](mailto:sm@thwhite.co.uk) for an application form.



**HORSE FEEDS**



**FROM  
£4.99  
PER BAG**

**PLUS  
BEDDING**

**FROM  
£4.99  
PALLET PRICE**

**T H WHITE  
COUNTRY STORE**

London Road, Marlborough  
Open Mon-Fri 8.00am to 6.00pm;  
Sat 8.00am to 5.30pm;  
Sun 10.00am to 4.00pm  
**01672 518408**



**2017 Fiat 124 Spider 1.4 MultiAir Lusso, VU17 AYF, Black, 800 miles only, £20,950.** Leather, Auto Climate Control, Heated Seats, Satnav, 3D Maps, Rear Camera, DAB Audio, Cruise, Electric Windows.



**2016 Fiat 500X, VK66 OSW, Blue, 5,300 miles, £13,450.** Auto Climate Control, Satnav, Cruise, Rear Parking Sensor, Dark Tinted Glass, Electric Windows, 17in 'Trekking' Alloy Wheels, TPMS.



**2016 Fiat 500X 1.6 MultiJet Pop Star, VK16 VOH, Grey, 7,325 miles, £12,450.** Cruise, DAB Audio, Auto Climate Control, Rear Parking Sensor, Satnav, Electric Windows, Start/Stop, 17in Alloys.



**2016 Fiat Tipo 1.6 MultiJet II Easy Plus, VX16 FSN, Silver, 7,300 miles, £11,950.** Ex-Demo, Air Conditioning, 5in Touchscreen, Electric Windows, 16in Alloys, Start/Stop, Bluetooth, Satnav.



**2014 Fiat 500L 1.4 Lounge, VA14 BVR, Blue, 11,700 miles, £8,750.** Fixed Glass Sunroof, Cruise, Dual Zone Climate Control, Electric Windows, Rain Sensor, Hill Holder, Rear Parking Sensors.



**2014 Fiat 500C 1.2 Lounge, VN64 TZT, Blue, 13,850 miles, £8,450.** Convertible, Automatic Climate Control, Rear Parking Sensors, Blue&Me Hands Free System with USB, Petrol, 59mpg.



**2015 Fiat 500 1.2 Lounge, VA64 OXF, Blue-Green, 22,000 miles, £7,250.** Air Conditioning, Start/Stop, Fixed Glass Roof, Electric Front Windows, Voice Recognition, Radio/CD/MP3.



**2015 Fiat 500 1.2 S, VA64 VFJ, Red, 30,000 miles, £6,950.** Air Conditioning, 7in Screen, Bluetooth, Voice Recognition, Radio/CD/MP3, 15in Alloy Wheels, Dark Tinted Windows.



**2014 Fiat Panda 1.2 Lounge, VK64 WZY, White, 12,000 miles, £4,995.** Air Conditioning, Pollen Filter, Electric Front Windows, 15in Alloy Wheels, Radio/CD/MP3, 54mpg, One Owner.



**2016 Fiat Panda 1.2 Pop, VK66 SNX, Red, 2,000 miles, £6,450.** Start/Stop, Radio/CD/MP3, Hill Holder, Electric Front Windows, Anti Whiplash Head Restraints, Tyre Pressure Monitoring System.



**2016 Alfa Romeo Giulietta JTDM-2 Sprint Speciale, VK16 PUU, Silver, 9,200 miles, £17,295.** 5-Hole Dark Alloys, Bose Sound System, DAB, Cruise, Rain Sensor, Climate Control, Dark Tinted Glass.



**2017 Alfa Romeo Giulietta 1.6 JTDM-2 Super Automatic, VU17 AYJ, Grey, 7,500 miles, £18,487.** Sports Red Leather, Visibility Pack, Lusso Pack, Comfort Pack, Heated Seats, Climate Control.



**2017 Alfa Romeo Giulia 2.2TD Super Automatic, VO17 BZB, Montecarlo Blue, 5,000 miles, £29,950.** Performance Pack, Sports Pack, Lighting Pack, Yellow Brembo Callipers, Dark Glass.



**2016 Alfa Romeo Giulia 2.0 Super Automatic, VO17 BZB, Montecarlo Blue, 5,000 miles, £29,950.** Performance Pack, Sports Pack, Lighting Pack, Yellow Brembo Callipers, Dark Glass.



**2015 Alfa Romeo 4C 1.8 TBI, BF65 CLO, Competizione Red, 4,065 miles, £41,995.** Leather Sports Seats, Racing Pack, 5-Hole Alloys, Voice Recognition, Digital Panel, Alarm, FSH, One Owner.



**2014 Abarth 500 1.4 T-Jet, VA64 HAO, Grey, 12,900 miles, £9,250.** Climate Control, Hill Holder, Electric Windows, Radio/CD/MP3, Blue&Me Hands-Free, 16in Abarth Painted 8-Spoke Alloys.



**2014 Abarth 500C 1.4 T-Jet Convertible, VK14 OVC, Red, 9,800 miles, £10,950.** Radio/CD/MP3, Auto Climate Control, Blue & Me, Voice Recognition, Rear Parking Sensors, 8-Spoke Alloys.



**2017 Abarth 595 1.4 T-Jet, VU17 AXW, Blue, 4,500 miles, £14,250.** Torque Transfer Control, TFT 7in Instrument Cluster, U-Connect Radio, Aux Interface, Electric Front Windows, Bluetooth, TPMS.



**2017 Abarth 124 Spider Roadster 1.4 MultiAir, VU17 AYB, Blue, 2,000 miles, £30,250.** Ex-Demo, Bose Audio, Visibility Pack, Abarth Leather, Heated Seats, Air Conditioning, 17in Alloys, Alarm.



**2017 Jeep Wrangler 2.8 CRD Overland Automatic, VU127 YXY, White, 2,850 miles, £30,950.** Ex-Demo, Low Mileage, Full Leather, Cruise, Climate Control, Satin Alloy Wheels, Power Windows.



**2016 Jeep Renegade 1.6 E-Torq Sport, VN16 NNK, Jetset Blue, 10,500 miles, £11,450.** Air Conditioning, DAB Audio, Power Windows, Hill Start Assist, Bluetooth, 16in Alloys, Alarm.



**2016 Jeep Renegade 1.4 MultiAir II Limited, VK66 SNZ, Solar Yellow, 6,850 miles, £16,950.** Satnav, Heated Front Seats, Dual Zone Climate Control, Cruise, Leather Upholstery, Tinted Glass.



**2015 Jeep Cherokee 2.0 CRD Automatic, WU15 TYX, Anvil Grey, 18,102 miles, £19,450.** Special Paint, Nappa Leather, Heated Front Seats, Cruise, Auto Air Conditioning, Sunscreen Glass.



**2017 Jeep Cherokee 2.2 MultiJet II, VA66 MVL, Recon Green, 7,091 miles, £27,495.** 75th Anniversary Model, Panoramic Sunroof, Park Assist, Morocco Nappa Leather, Auto Aircon, Rain Sensor, Alarm.



**2017 Jeep Grand Cherokee 6.4 Hemi SRT, VE17 OXL, Red, 1,200 miles only, £50,995.** £19,000 Saving! Nappa Leather & Suede Heated Ventilated Seats, Rain Sensor, Rear View Camera, Alarm.



## MOTOR GROUP

On 4 July 1957 the first Fiat 500 rolled off the production line in Turin. The cheeky 'big small car' was under 10ft long and set the pattern for truly tiny city cars with more than four million being sold in 18 years of production.

60 years later the new incarnation of the 'cinquecento' – admittedly somewhat larger than the original – remains just as popular, having already sold over two million across 100 countries. Among the celebrations of the 500's 60th anniversary comes this extra special 'Fiat 500-60th' edition.



and pillars. Chrome mirror covers, 16-inch alloy wheels with white diamond finish and vintage Fiat logos complete the look. As this special edition is based on the 500C convertible, a heavyweight grey fabric is used for the famous flip-back sunroof.

Inside, a new Bordeaux vinyl dashboard is matched by retro-inspired ivory leather seats with contrasting Bordeaux piping, a multifunction leather-covered steering wheel, ivory leather gear knob, bespoke floor mats and 500-60th kickplates.

## CINQUECENTO: 60 YEARS OF AN ICON

Just 250 of these super-chic cars are coming to the UK and if you are quick you can reserve one at the T H WHITE Fiat Group Brand Centre in Swindon.

While bristling with retro styling cues, the 500-60th is bang up to date and offers luxury that's in a different universe from the original Fiat 500.

On the outside the Fiat 500-60th celebrates the Dolce Vita era with special bi-colour paintwork: tri-coat white for the body of the car and pastel ivory for the bonnet



Technology abounds too, with Apple CarPlay and Android Auto™ both available as standard, a 7in HD Uconnect live touch screen, Bluetooth, satnav, rain and dusk sensors, cruise control, automatic climate control, fog lights and rear parking sensors.

Three petrol engines are available from 69hp to 105hp, the most frugal of which is capable of returning up to 73mpg on the combined cycle.

The Fiat 500-60th starts at £19,240 OTR. For more information please call us on 01793 393319.

## AN EXCEPTIONAL OFFER FOR BUSINESS USERS



CO <sub>2</sub> FROM 89G/KM	MPG UP TO 83.1	BIK 20%	P11D FROM £17,290
--------------------------------	-------------------	------------	----------------------

**AMORE**  
5" TOUCHSCREEN WITH NAVIGATION  
UCONNECT LIVE SERVICE  
AIR CONDITIONING  
440 LITRE BOOT CAPACITY  
SPACE FOR BIG IDEAS  
REAR PARKING SENSORS  
ADAPTIVE CRUISE CONTROL  
16" ALLOY WHEELS  
FRONT SEAT CENTRAL ARMREST

**FOR £149\***  
A MONTH



**NEW TIPO ELITE**

**T H WHITE  
MOTOR GROUP**

FOREST PARK ROAD, MEAD WAY, HILLMEAD, SWINDON SN5 5QJ.  
TEL: 01793 393310 MOTORS.THWHITE.CO.UK/FIAT

Fuel consumption figures for the new Fiat Tipo Elite range in mpg (l/100km): Urban 68.9 (4.1) – 70.6 (4.0); Extra Urban 88.3 (3.2) – 94.2 (3.0); Combined 80.7 (3.5) – 83.1 (3.4). CO<sub>2</sub> emissions 92 – 89 g/km. Fuel consumption and CO<sub>2</sub> figures based on standard EU tests for comparative purposes and may not reflect real driving results. \*Business Contract Hire. Fiat Tipo Elite 1.6 MultiJet 120hp. Initial rental of £894 followed by 23 monthly rentals of £149, excl. VAT & maintenance. Based on 8,000 miles p.a. Excess mileage charges apply. Vehicles must be registered between 01/07/17 and 30/09/17. Subject to status. Guarantees may be required. Ts&Cs apply. Fiat Contract Hire, SL1 0WU. Vehicle shown has optional metallic paint at £458.33 which will increase your initial rental by £75 and monthly rental by £12.50.



## BIG NAMES IN USED EQUIPMENT



2013 Lexion 760 Combine, laser pilot LH, weigher, moisture, 25ft header, rape plates, **£145,500 RL**



2010 New Holland CR9060 RX10AOY Combine, laser guidance, 25ft new varifeed header. **£110,000 RL**



2009 New Holland CSX7060 Combine, intelligview 2, self levelling, 20ft varifeed header & trailer. **£72,000 RL**



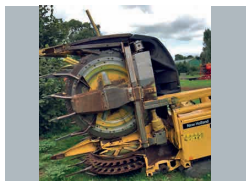
Ex-demo, 2017 New Holland FR650 Forager, 4wd, 40kph, engine compressor, autofloat, **£ POA RM**



2010 New Holland FR9060, 4wd, grass & maize **£78,500 AT**



2000 New Holland FX38, 3317 cutting hrs, 4650 engine hrs, crop processor **£22,000 RM**



2004 New Holland 8 Row Maize Header, to fit New Holland FR. Very good condition **£15,000 AT**



2002 New Holland RI600 Maize Header, good condition **£ 14,000 RM**



2011 New Holland BB9060 Packer Cutter Baler, 42000 bales, VGC **£ 37,500 RM**



2010 Claas 2100 Big Square Baler, 29,000 Bales, very good order, well maintained. **£28,500 CD**



2002 New Holland BB940 Big Baler, 92000 Bales, good condition for age **£17,500 AT**



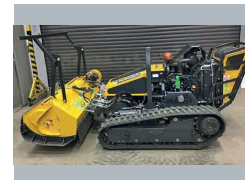
2002, Claas 2200 Big Square Baler, 120 x 70 bale, rotor feed, single axle, good working order **£12,750 JW**



New Holland BC5060 Baler, like new only done small amount of work **£10,200 RM**



Ex-Hire New Holland T5, approx 300 hrs, available late July, c/w 0% finance & warranty **£POA BW**



EX-HIRE - McConnel Robocut, 124 hrs c/w flail head 1300, option to buy Mulcher **£33,500 RM**



2015 Kuhn FC313DF, front mounted 8 disc cutterbar, 3.1m cut, steel condition, fast fit blades **£7,800 BW**



2010 Vaderstad RDS400S 4m Drill & Till, very good condition **£32,000 BW**



2011 Manitou MLT 634T, 120 LSU PS, pin & cone, excellent condition **£31,000 JW**



Built 2015, Case IH CX18 Cab Excavator, 4 hrs engine, 1.8t, blade, rubber tracks, **£14,700 SCT**



2015, Honda TRX500FA, Heavy duty utility foreman, excellent condition **£5,650 TR**

Sales Hotline: **01373 465941** (Mon-Fri 08.00-17.00) Out of hours: **07710 985957**

New: [www.thwhiteagriculture.co.uk](http://www.thwhiteagriculture.co.uk) Used: [www.thwhiteused.co.uk](http://www.thwhiteused.co.uk)

### TRACTOR

2008 New Holland T6080 PC, c/w front loader **POA JW**

### MACHINERY

2013 Kuhn GF7902 Mounted Tedder, 7.8m 8 hyd folding rotors **£7,000 BW**  
 Hardi 18m Sprayer c/w MOT, VGC **£6,950 RM**  
 2015 Teagle Multidisc 300, excellent **£6,500 RB**  
 2011 Kuhn Euromix 1460, horizontal augers, 5 tooth knives, hopper extension **£6,500 RL**  
 EX-DISPLAY Opico Sward Slitter **£6,250 RB**  
 2012 Kuhn FC313F, front mounted 8 disc cutterbar, 3.1m cut, fast fit tines, wide

swath kit, SCV type - manual, **£5,500 BW**  
 2014 Spreadwise Industrial 6 Reeler **£4,995 BG**  
 Kuhn MM121 5 Furrow Plough **£4,000 BW**  
 2015 Kuhn GMD240 Disc Mower, 200 acres from new **£4,000 RD**  
 2003 Amazon KE303 Power Harrow 3 metres **£3,500 RD**  
 Albutt heavy Buck rake, Hardox tines, good condition **£3,000 RM**  
 Kverneland KD824 Beeder & feeder c/w silage conveyor **£1,500 RM**  
 2016 New Holland Trimble 372 RTK radio to fit Trimble 372 receiver **£1,450 RM**  
 Yard Scraper, average condition **£750 RM**

2017 Albutt Bale Grab, as new square or round bale handler for wrapped or unwrapped bales **£1,200 SK**

### POST KNOCKER

Protech post driver, exc condition **£2,000 RD**

### TRAILER

1998, Marston 8 ton Grain Trailer **£2,500 RD**

### WANTED

Used DeLaval milking equipment, mainly electronic Alpro computerised systems with or without in parlour feeding but most considered **Contact AM**

**RB Ray Bennett 07710 985957**  
**PC Paul Churches 07702 724308**  
**SCT Steve Clucas-Tomlinson 07860 593339**  
**SC Stuart Crook 07831 249489**  
**AD Andy Daffurn 07860 331023**  
**CD Colin Davis 07860 401211**

**RD Rhodri Davies 07775 003460**  
**BG Bob Gallop 07831 883734**  
**MH Matt Hooper 07824 607087**  
**SK Simon Knight 07860 712963**  
**RL Ryan Lanfear 07769 248602**  
**AM Adrian Moore 07860 247367**

**RM Richard Morgan 07831 351379**  
**SP Simon Pratt 07909 895502**  
**TR Tim Rochfort 07973 911934**  
**AT Andy Taylor 07831 255811**  
**BW Ben Willcox 07826 917955**  
**JW Joe Woolley 07818 077591**

All items offered are subject to remaining unsold. Prices shown do not include VAT.

